

Technical data sheet

Power supply · 60 W

Switchmode power supply, Single-phase

Input: wide-range input AC 85–264 V, DC 90–375 V

Output: DC 12 V, 5 A



Identification

Type DRAN60-12A
Part No. [722769](#)

Product version

Datasheet version 01

Input

Number of phases 1
Rated voltage U_N AC 100–240 V
Operation voltage range AC 85–264 V / DC 90–375 V
Frequency range 47 Hz – 63 Hz
Rated current I_N 1.06 A @ AC 115 V / 590 mA @ AC 230 V
Inrush current 30 A @ AC 115 V / 60 A @ AC 230 V
Internal fuse T2A / AC 250 V
External protection Mini-circuit breaker: B 6 A

Output

Output voltage/current DC 12 V/5 A
Rated voltage U_N DC 12 V
Rated current I_N 5 A
Power Dissipation 9 W @ AC 230 V
Setting range $U_{out\ min.}/U_{out\ max.}$ 12-14 V
Accuracy $\pm 1\ %$
Load regulation $\pm 0.5\ %$
Line regulation $\pm 0.5\ %$
Rise time 2 s
Temperature coefficient $\pm 0.03\ % / ^\circ C$
Ripple and noise 50 mV
Hold up time 20 ms @ 115 V / 30 ms @ 230 V

USA: LUTZE INC.

13330 South Ridge Drive • Charlotte, NC 28273, USA
Tel. +1 (704) 504-0222 • Fax +1 (704) 504-0223
www.lutze.com • info@lutze.com

19.08.2022 • Subject to technical modification

Part No. [722769](#) • Datasheet version: 01

page 1 of 4



SYSTEMATIC TECHNOLOGY

Technical data sheet

Power supply · 60 W

Parallel / redundant mode	Max. 2 devices / via external decoupling diodes e.g. 722987
Efficiency	86 %
Over voltage protection	125–138 %
Rated over load protection	110–150 %
Short circuit	Fold Forward

Status indication

Status indication DC ON LED green <9.0 V

General

Switching frequency	55 – 135 kHz
Insulation voltage input / output	DC 4.2 kV
Insulation voltage input / ground	DC 2.1 kV
Insulation voltage output / ground	DC 710 V
Insulation resistance at DC 500 V	100 MΩ
Derating	2.5 %/°C starting 61 °C
Cooling	Air convection, 25 mm clearance all-round
Housing material	Plastic
Mounting	DIN rail mountable TS35 (EN 60715)
Max. altitude operation	5000 m (EN 62368-1)
Installation position	Vertical
MTBF	556000 h
Degree of protection	IP20
Protection class	I
Weight/unit	0.41 kg
Connection type	Screw terminal 0,20 mm ² – 2,5 mm ² AWG 26 – AWG 12
Dimensions (w × h × d)	40.5 mm × 90.0 mm × 115.0 mm
PU (units)	1

General ambient conditions

Operation temperature range	-40 °C ... +70 °C (Derating)
Storage temperature range	-40 °C ... +85 °C
Over voltage category	II
Degree of pollution	2
Relative air humidity	20 – 90 % RH, not condensing

Approvals/Standards

Approvals	UL 508 Listed (E249179) UL 60950-1 CE UKCA
-----------	-----------------------------------------------------

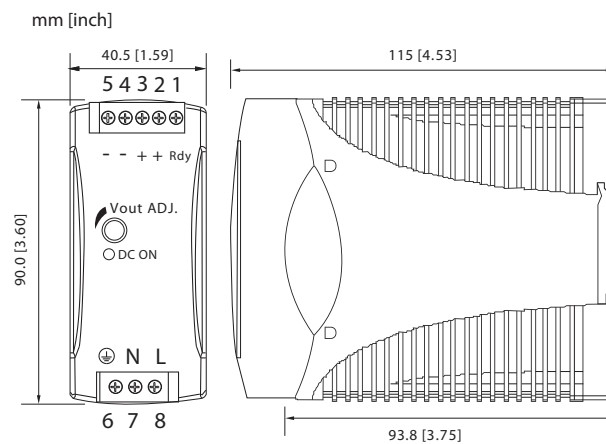
Technical data sheet

Power supply · 60 W

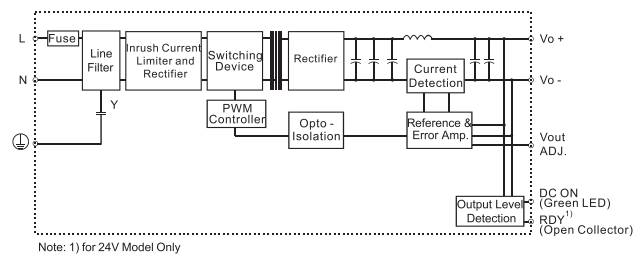
Standards

IEC/EN 62368-1
EN 61558-1
EN 61558-2-16
EN 61000-6-3
EN 55032 Class B
EN 61000-3-2 Class D
EN 61000-3-3
EN 61000-6-2
EN 55024
EN 61000-4-2 Level 4
EN 61000-4-3 Level 3
EN 61000-4-4 Level 4
EN 61000-4-5 L-N Level 3
L/N-FG Level 4
EN 61000-4-6 Level 3
EN 61000-4-8 Level 4
EN 61000-4-11 ENV 50204 Level 2
EN 61204-3

Dimensions



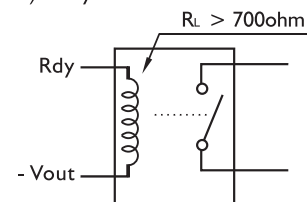
PIN assignment



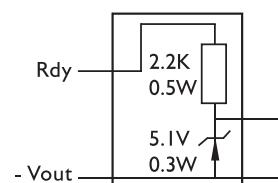
Use

Rdy connection

a) Relay



b) 5V signal

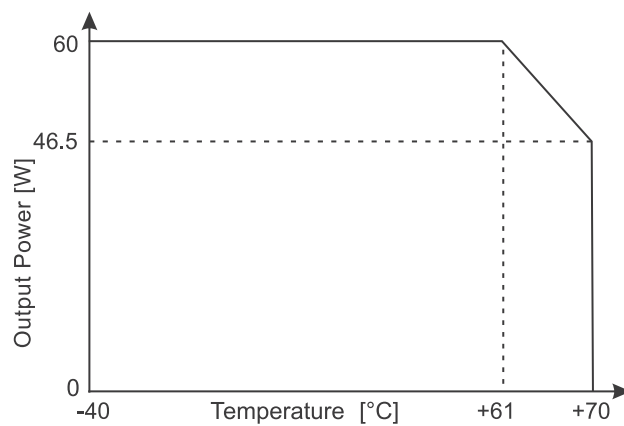


Note: for 24V Model only

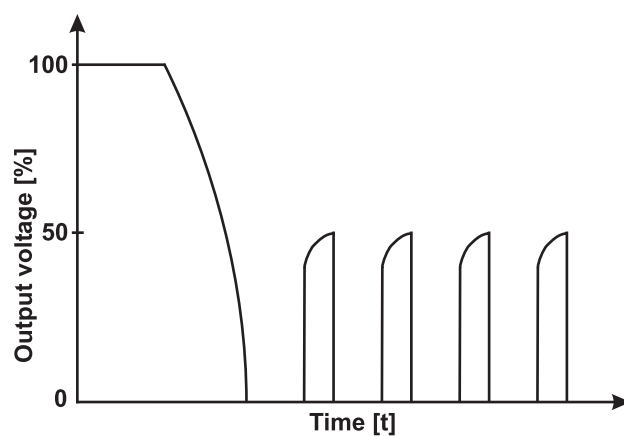
Technical data sheet

Power supply · 60 W

Derating



Short circuit characteristics



Short circuit characteristics

